



**StreamLine™**

Dear Design Professional:

**StreamLine™** design accessories add the perfect finishing touch to your project. All are proudly manufactured in the USA of the highest quality materials and in stock for immediate shipment.

Our systems are widely used in high-end retail, Fortune 500 corporate identity, and commercial signage applications. Amazingly flexible, you can reconfigure and modify your display in just seconds so it is always current and relevant.

Please visit our website for specifications, product details and other product catalogs. If you would like more information or assistance, please contact us.

Your Carl Stahl DécorCable Sales Team

Contents:

	Aluminum Standoffs	3
	Stainless Steel Standoffs	4
	Heavy Duty Hanging Systems	5
	Warranty and Ordering	6

# StreamLine™ Aluminum Standoffs

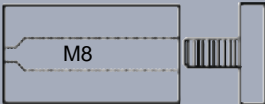
Our high quality aluminum standoffs look like traditional standoffs but they cost less to buy and less to install. We simplified the design to allow quick installation with standard fasteners to save you time and money. Here's what makes our new StreamLine™ aluminum standoffs better:

- Manufactured in the USA from aircraft quality 6061-T651 aluminum and clear anodized for a beautiful and durable finish.
- Installed with “off the shelf” fasteners available from Carl Stahl DécorCable or your local hardware store.
- Available in 1” and 2” lengths.
- Custom sizes and colors available.
- Same day shipping.
- Compatible with our stainless steel bases and caps.
- Standoffs are sold as a set. Caps and Bases are available separately.



## StreamLine™ Aluminum Standoff Components

Complete Standoff Kit  
1” x 1” Item# 900A-25-0100-00  
1” x 2” Item# 900A-25-0200-00



Base Only  
1” x 1” Item# 900A-25-0100B-00  
1” x 2” Item# 900A-25-0200B-00



Cap Only  
1” x 1” overall with 3/4” thread  
Item# 900A-25-0008-00



## StreamLine™ Aluminum Standoff Installation Hardware

#6 Screw-In Anchor and  
#6 x 1½” Drywall screw kit  
Item #900-05-01



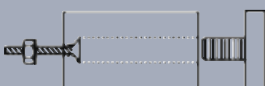
1/8” toggle and 6-32 x 2 ½”  
machine screw kit  
Item #900-05-02



#6 x 1½” wood screw  
Item #900-05-03



6-32 x 2 ½” machine screw  
and 6-32 washer and nut kit  
Item #900-05-04



## StreamLine™ Stainless Steel Standoffs

Elegant and affordable – Our stainless steel standoffs are great for supporting transparent visual displays such as art glass and special acrylics. They are also appropriate for exterior applications. Fabricated from AISI 304 stainless steel, the high quality brushed finish will complement your display and last a lifetime.

Our stainless steel standoffs come in three widths and four lengths. Please see the table below for technical information. All are in stock for immediate delivery. If your project requires a custom size and quick turnaround, we will fabricate to your specification in just a few days. Please ask your salesperson for details.

Standoffs are sold as a set. Caps and Bases are available separately.



### Standoff Technical Information

Part Number 900-	Thread Size	Body Length	Cap Thickness	Min. Media Thickness	Max. Media Thickness	Diameter
16-0100	M6	1"	5mm	1/8"	3/8"	5/8"
16-0200	M6	2"	5mm	1/8"	3/8"	5/8"
16-0300	M6	3"	5mm	1/8"	3/8"	5/8"
20-0100	M8	1"	5mm	1/8"	1/2"	3/4"
20-0200	M8	2"	5mm	1/8"	1/2"	3/4"
20-0300	M8	3"	5mm	1/8"	1/2"	3/4"
25-0050	M8	1/2"	5mm	1/8"	1/2"	1"
25-0100	M8	1"	5mm	1/8"	1/2"	1"
25-0200	M8	2"	5mm	1/8"	1/2"	1"
25-0300	M8	3"	5mm	1/8"	1/2"	1"
25-0258 <sup>+</sup>	M8	N/A	5mm	1/8"	3/4"	1"
25-0008 <sup>++</sup>	M8	N/A	5mm	1/8"	N/A	1"

1/2" and 1" standoffs have entire length threaded. 2" and 3" standoffs have 15mm bore depth at each end.  
+Long Thread Cap Only.  
++ Inside Thread Cap Only. Order M8 headless screw for media thickness plus 1/2".

### StreamLine™ Stainless Steel Standoffs Installation Hardware:



Dual Thread Screw  
M6 and M8  
Zinc-Plated Steel  
Standard Length - 2"



Headless Screw  
M6 and M8  
Zinc-Plated Steel  
Standard Length - 2"  
Other Lengths Available



Heavy Duty Plastic Drywall Anchor  
For M6 and M8 dual thread screws.  
Drill Hole Size:  
M6 - 5/16"  
M8 - 3/8"



Sleeve and Washer Kit  
For M8 threads, only.  
White Nylon  
Specify 1/4", 3/8", & 1/2" Thick Media.

# Heavy Duty Hanging Systems

## IKD Series Stainless Steel Suspension Assemblies and Connectors

For heavier hanging requirements, outdoor applications, or just a more rugged look, we offer 3mm and 4mm IKD assemblies and associated connectors. Use for outside signage, trellis support, and façade suspension. Indoors, IKD cables work well in waterfalls, pool areas, etc.

Ropes and components are fabricated from AISI 316 stainless steel and holding components from AISI 304. Rope kits are field adjustable and accommodate ceiling heights of up to 14'-11". Connectors securely hold up to 1/2" materials and are very conservatively rated at 25 lbs. each.

We manufacture all sizes of stainless cables and components and would be happy to assist you with the design and installation of a custom application. Please visit our website or consult your salesperson for project ideas and product details.



836-0600-05  
Cover Disk

Field adjustable vertical assembly with 15' cable, 857-0400-035 Swivel End, 831-0400 Field End, and two pieces 836-0600-05 Cover Disk. Installation hardware sold separately.



900-04V-005  
Stainless Steel Vertical  
Panel Connector



900-04H-005  
Stainless Steel Horizontal  
Panel Connector



900-04DV-005  
Stainless Steel Double  
Sided Panel Connector



900-04-001  
Stainless Steel Drilled  
Panel Connector



863-0400-02  
Light Clamp Ring  
With Adapter

### Installation Hardware:



Dual Thread Screw  
M6 and M8  
Zinc-Plated Steel  
Standard Length - 2"



Headless Screw  
M6 and M8  
Zinc-Plated Steel  
Standard Length - 2"  
Other Lengths Available



Expansion Anchor  
For M6 Threads  
Zinc-Plated Steel



### **Important Information:**

Assembly and mounting instructions for the specific components purchased are included with the shipment. It is important that you read and follow them. Weight limitations are included only as general guidelines and are not suitable for all applications.

It is the responsibility of the purchaser and/or installer to verify that the mounting surface is solid and capable of supporting the load limit of the installed components and to determine the appropriate size and type of anchor for the application. Because each application is different, it is the responsibility of the purchaser to provide the correct anchoring system. If you have any questions, please consult Carl Stahl DecorCable or your installer.

### **Limited Warranty:**

CARL STAHL DECORCABLE INNOVATIONS LLC ("DCI") warrants that all metallic cable, rod and furniture products shall be free from defects in materials and workmanship under normal use, installation and maintenance in accordance with product specifications. If any failure to conform to this warranty is reported to DCI within one year from the date of purchase by the original buyer, DCI, upon being satisfied of the existence of such non-conformity, will correct same at its discretion by repairing or replacing the product. This warranty does not cover damage resulting from mishandling in transit, vandalism, misuse, abuse, neglect, alteration, natural disasters, or failure to exercise reasonable care in installing or maintaining the product. This warranty applies only to the original buyers who purchased the product directly from DCI. Glass, acrylic, and wooden displays and furniture are covered by the same warranty as stated above for a period of 30 days from date of purchase by original buyer.

To obtain service under this warranty, call our service department at (800) 444-6271.

**THIS WARRANTY IS IN LIEU OF AND EXCLUDES ALL OTHER WARRANTIES, EXPRESSED OR IMPLIED, ARISING BY OPERATION OF LAW OR OTHERWISE, INCLUDING ANY WARRANTY OF MERCHANTABILITY OR FITNESS FOR PARTICULAR PURPOSE OR OTHERWISE, AND NO REPRESENTATION OF WARRANTY, EXPRESSED OR IMPLIED, MADE BY ANY SALES REPRESENTATIVE OR OTHER AGENT OF DCI. IN NO EVENT WILL DCI BE LIABLE FOR INCIDENTAL OR CONSEQUENTIAL DAMAGES.**

This warranty gives you specific legal rights, and you may have other rights which vary from state to state.



Carl Stahl DecorCable  
2401 International Pkwy., Ste. B  
Woodridge, IL 60517

T 312-474-1100  
E sales@decorable.com

www.decorable.com

Visit our website or call your salesperson for more information about our family of fine architectural design products...

Posilock® - Cable Suspension System for Visual Displays

StreamLine™ - Design Accessories

I-SYS® - Stainless Steel Tension Ropes, Rods and Components

X-TEND® - Flexible Stainless Steel Cable Mesh

FRAMEWORKX® - Pre-mounted Cable Mesh Railing Infill Panels

Greencable™ - Greenery System with S.S. Cables and Aluminum Standoffs